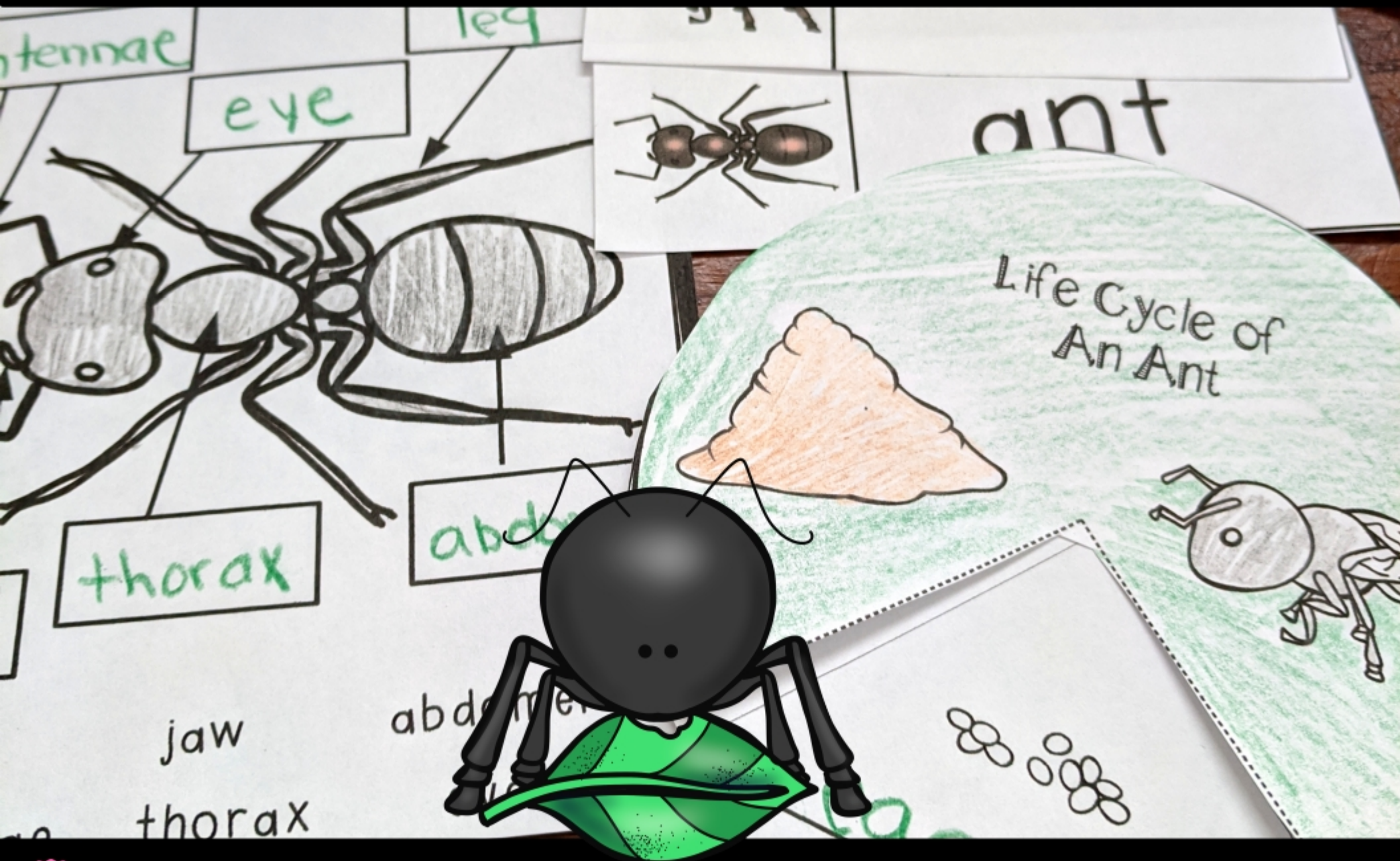



ANT



Life Cycle & Research Companion

ANT

Name: _____		
All About ANTS!		
K	I know...	
W	I want to know...	
L	I learned...	

I can draw and write to tell about ants.

I know...

I want to know...

I learned...

I can write to tell about ants.

I know...

I want to know...

I learned...

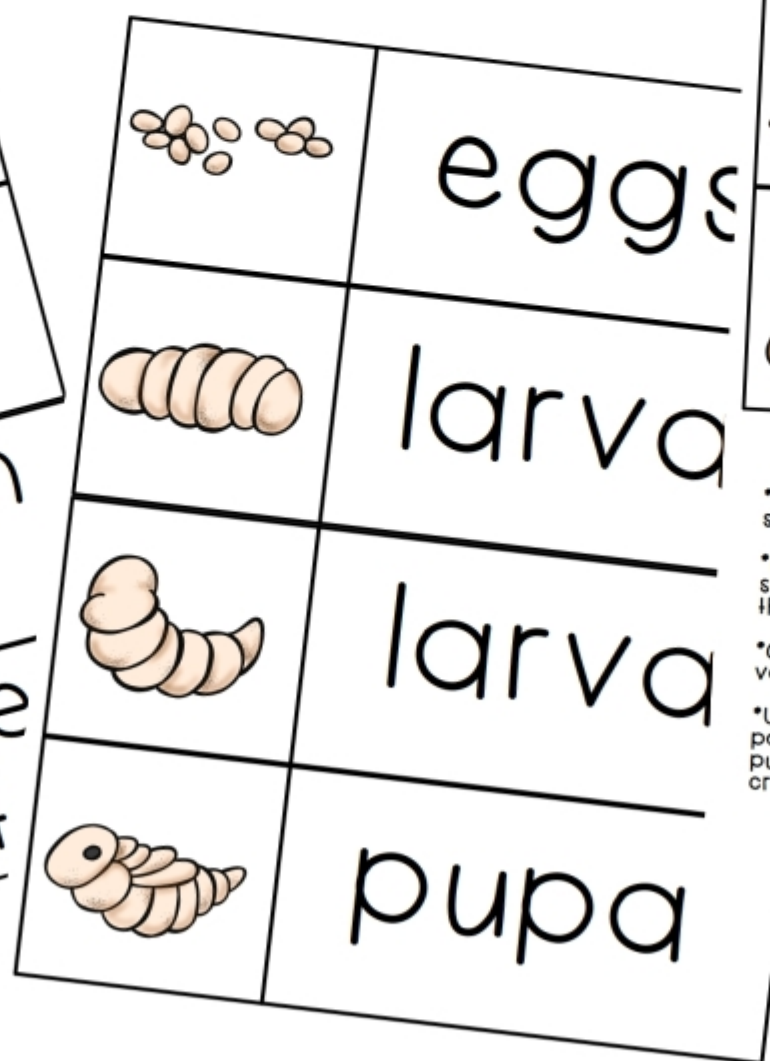
ANT

Two printable worksheets titled "All About Ants" are shown, tilted at an angle.

The left worksheet features a "Name: _____" line at the top. Below the title, there are four large empty circles for drawing. In the center, a small circle contains a line drawing of an ant and the word "Ants".

The right worksheet also has a "Name: _____" line at the top. Below the title, there are numerous horizontal lines for writing. At the bottom right, there is a line drawing of an ant.

ANT



Suggested Uses For Vocabulary Cards

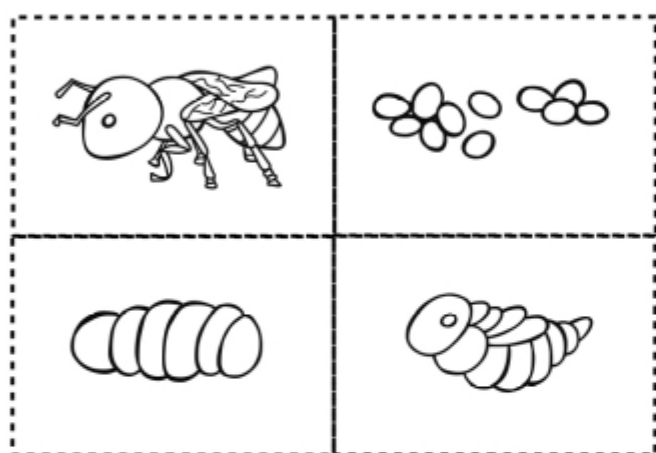
*Display the cards on a chart or word wall while you are studying and learning about the life cycle.

*Print copies of the cards for tables or areas where students are working to support writing associated with these activities.

*Cut the word apart from the picture and play a vocabulary match game.

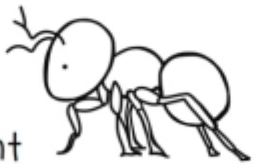
*Use the blank copy of these cards on the following page for students to write and illustrate keywords they pull from the books or videos they are using in order to create a student generated word wall.

ANT



Name: _____

How an Ant Grows





The Life of an Ant 

By: _____

Name: _____

Ant Life Cycle

Glue the life cycle pieces in order. Write to describe each stage.

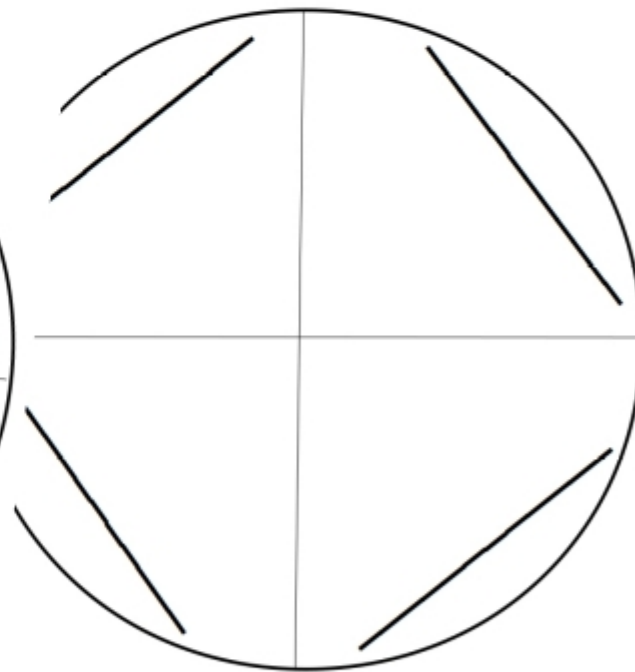
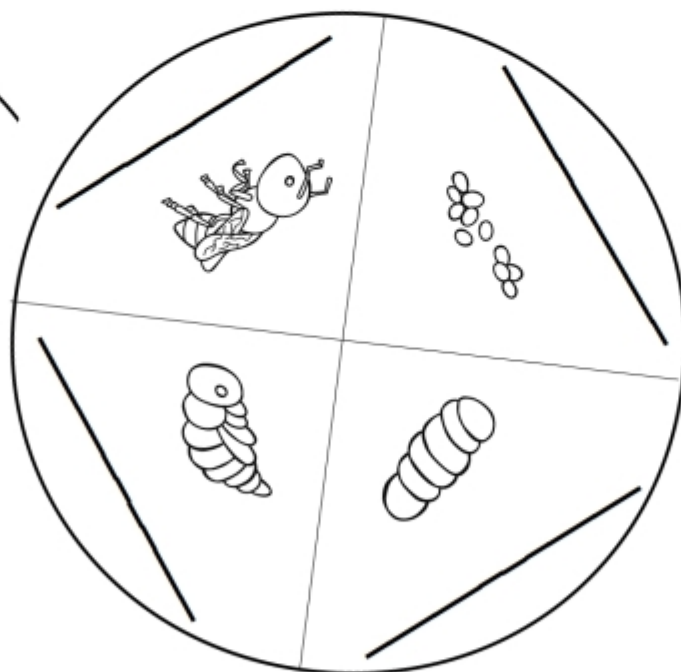
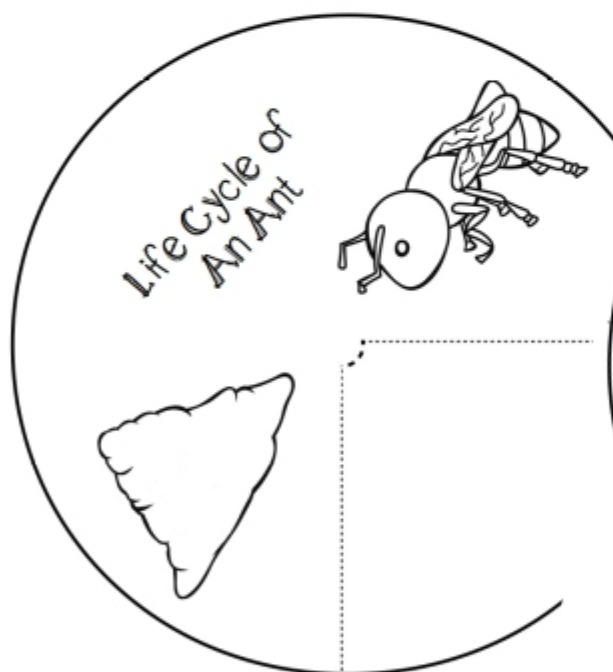
		
		

ANT

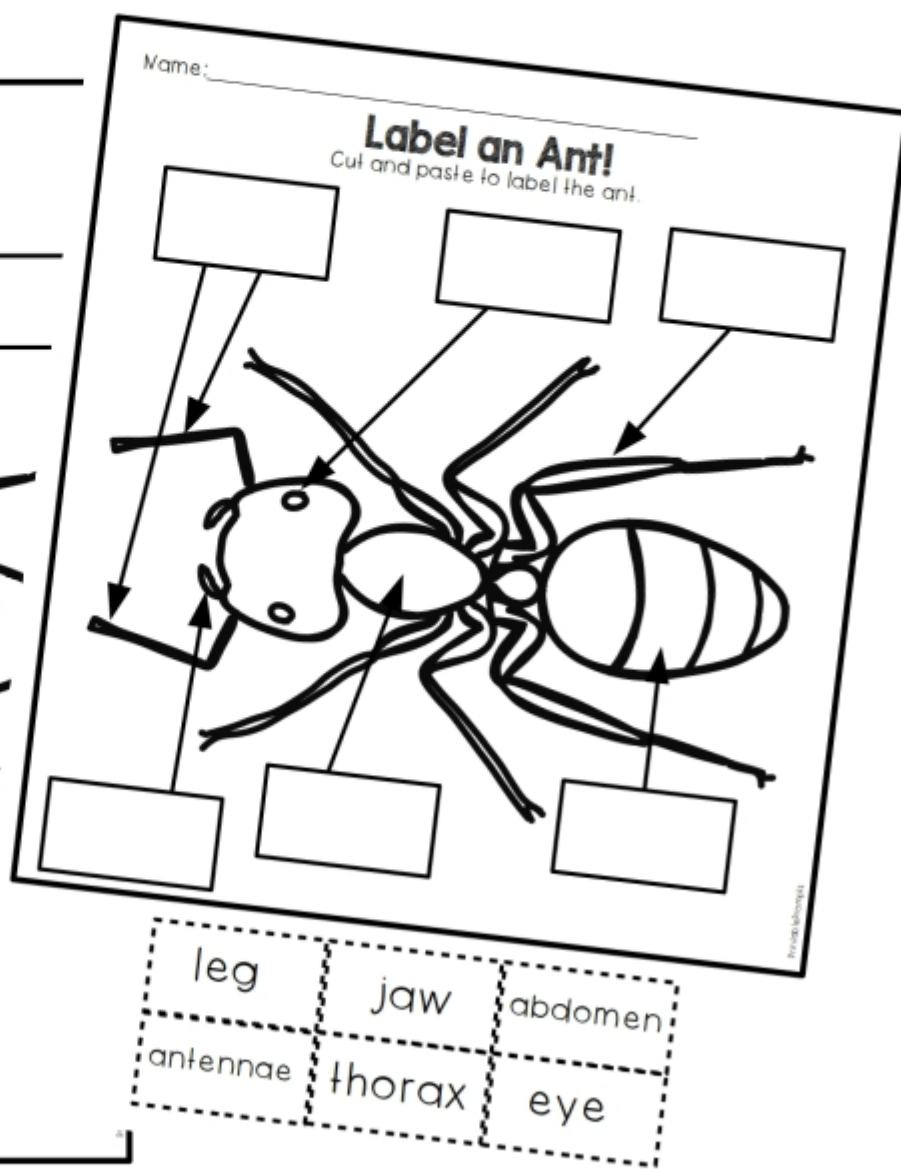
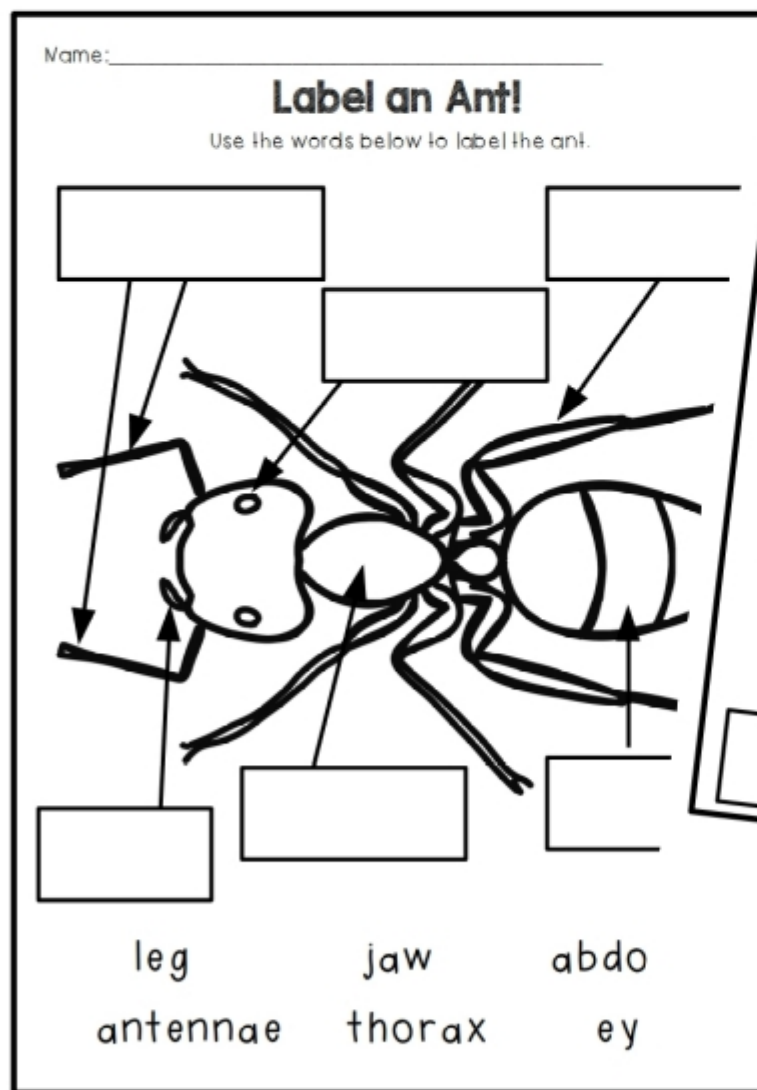
Cut out the circle. Cut on the dotted lines.
Then attach it to your life cycle spinner with a brass fastener.

Write the word to match the picture.
Then cut out the circle and attach it to the spinner cover with a brass fastener.

Write and draw to show how an ant grows.
Cut out the circle and attach it to the spinner cover with a brass fastener.



ANT



ANNT

Teaching Notes

These resources are designed to be used along with any books or videos you have access to in your classroom about the life cycle of an ant.

At the front of this resource you'll find vocabulary cards. Ideas for using these cards are listed on the vocabulary card page. These cards can be used to support the rest of the materials in this resource.

There are two main components of this resource:

Research Companion:

A research companion is a group of resources to help your students to organize research and present research about a topic. This resource includes a few different research companion materials.

***KWL Chart-** This chart can be printed with the front page and then either version of the inside page (2 included). Copy and staple two times on the lefthand side so it opens like a book. Cut along the dotted lines on the top sheet only and only to the border line so the pieces do not completely come apart. Students can then lift the flaps of the top 2 parts before researching or learning about ants to write what they know and what they want to know. After researching, they can record what they have learned.

Graphic Organizer- This web organizer is a great way to collect information and keywords about ants.

Writing Pages- Two different line sizes for writing pages are included for students to write to show what they've learned about ants. There is also a booklet included with a cover and a line page. Print as many of the line page as you'd like to include if this is the writing product you'd like your students to use.

Life Cycle Resources:

***Cut and Paste-** There is a cut and paste (then write) option, cut and paste with a one word label, and cut and paste booklet, so you can choose the way you'd like your students to show what they know. The booklet can also be used to draw and write if you'd prefer.

Life Cycle Wheel- The included life cycle wheel has a cover part and 2 included options for completing the inside: color and label, and draw and label wheel. Follow the directions on the pages in order to assemble your life cycle wheel.

There is also a differentiated labeling extension activity.



TEACHING NOTES